

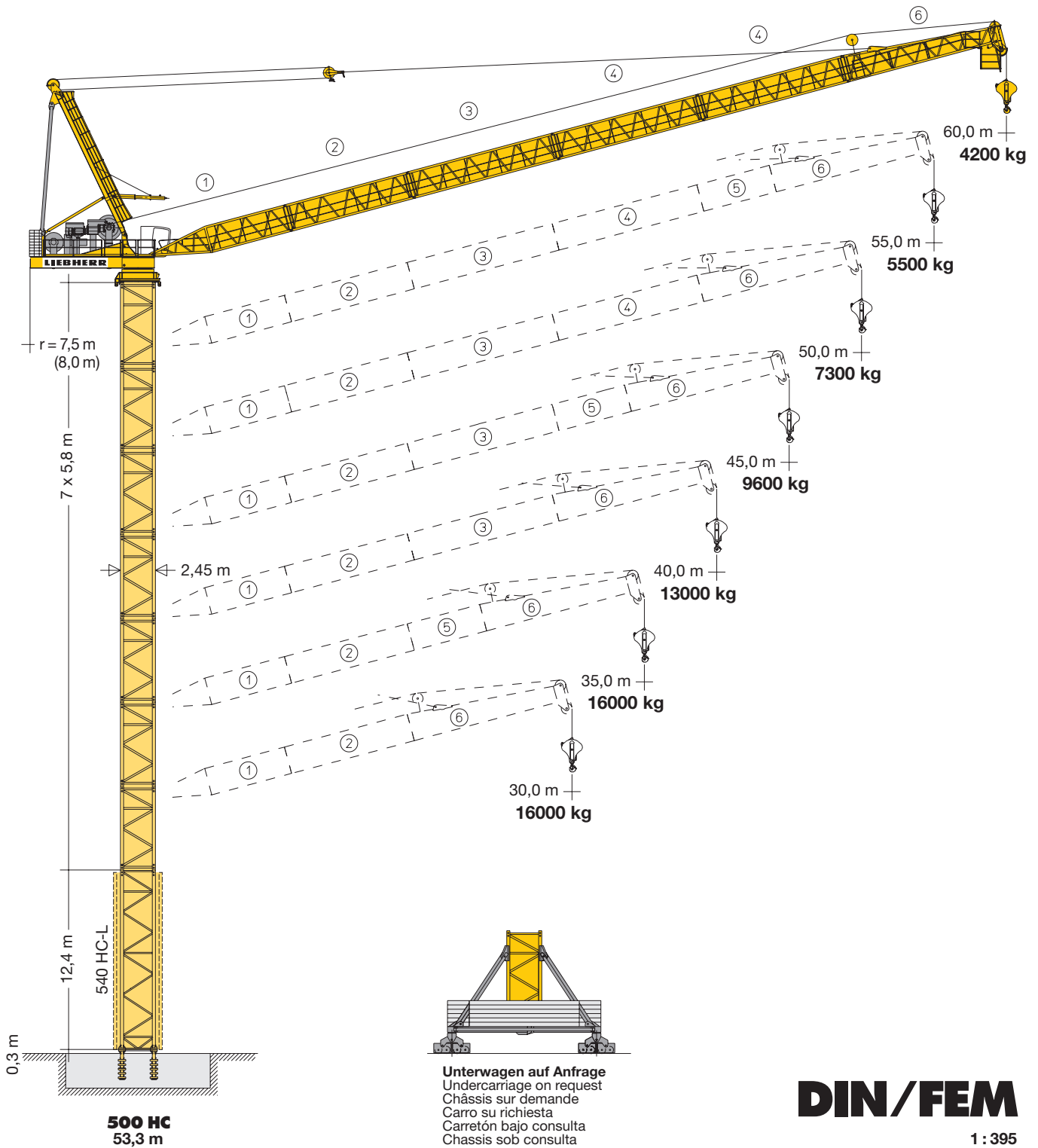
# Turmdrehkran

Tower Crane / Grue à tour / Gru a torre  
Grúa torre / Guindaste de torre

# 355 HC-L 16/32 Litronic®

**355 HC-L 12/24**

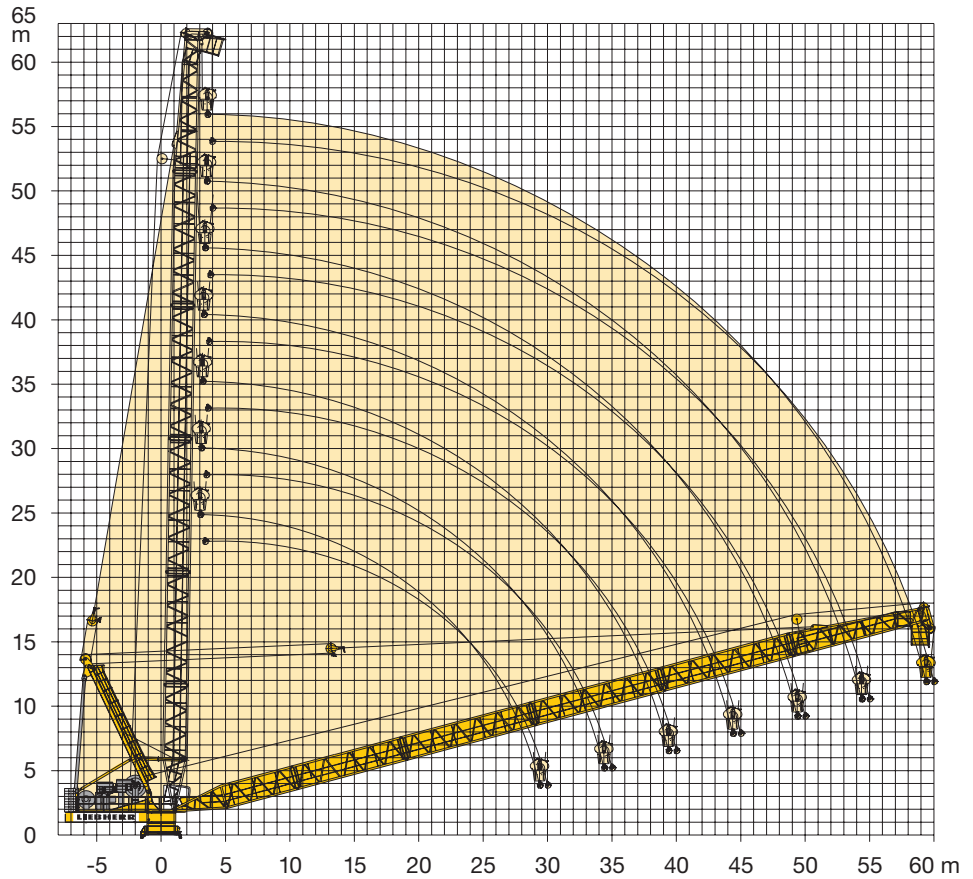
**355 HC-L 16/32**



# LIEBHERR

# Ausladung und Hubhöhe

Radius and hoisting height / Portée et hauteur de levage  
Sbraccio e altezza di sollevamento / Alcance y altura de elevación  
Alcance e altura de elevação



# Turmhöhen

Tower heights / Hauteur de mât / Altezze torre / Alturas de torre / Alturas de torre

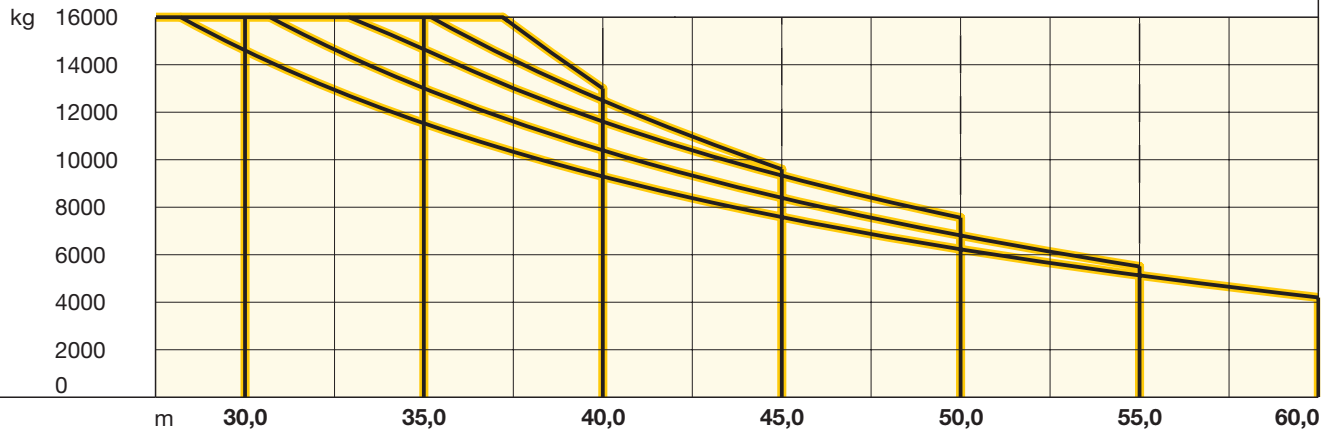
		500 HC							
		Ausleger / Jib / Flèche / Braccio / Pluma / Lança				Ausleger / Jib / Flèche / Braccio / Pluma / Lança			
		30,0 m	35,0 m	45,0 m	55,0 m	30,0 m	35,0 m	50,0 m	60,0 m
			40,0 m	50,0 m	60,0 m		40,0 m	55,0 m	60,0 m
11		64,2*	–	–	–	–	–	–	–
10		58,4	58,4*	–	–	70,7*	–	–	–
9		52,6	52,6	52,6*	–	64,9	64,9*	–	–
8		46,8	46,8	46,8	46,8*	59,1	59,1	59,1*	–
7		41,0	41,0	41,0	41,0	53,3	53,3	53,3	53,3*
6		35,2	35,2	35,2	35,2	47,5	47,5	47,5	47,5
5		29,4	29,4	29,4	29,4	41,7	41,7	41,7	41,7
4		23,6	23,6	23,6	23,6	35,9	35,9	35,9	35,9
3		17,8	17,8	17,8	17,8	30,1	30,1	30,1	30,1
2		12,0	12,0	12,0	12,0	24,3	24,3	24,3	24,3
1		6,2	6,2	6,2	6,2	18,5	18,5	18,5	18,5
0		0,4	0,4	0,4	0,4	12,7	12,7	12,7	12,7
		m				m			

\* Außer Betrieb, Auslegerstellung 15° – 70°. / Out of operation, jib position 15° – 70°. / Hors service, position de flèche 15° – 70°. / Fuori servizio, posizione braccio 15° – 70°. / Posición de pluma, fuera de servicio 15° – 70°. / Posição da lança, fora de serviço 15° – 70°.

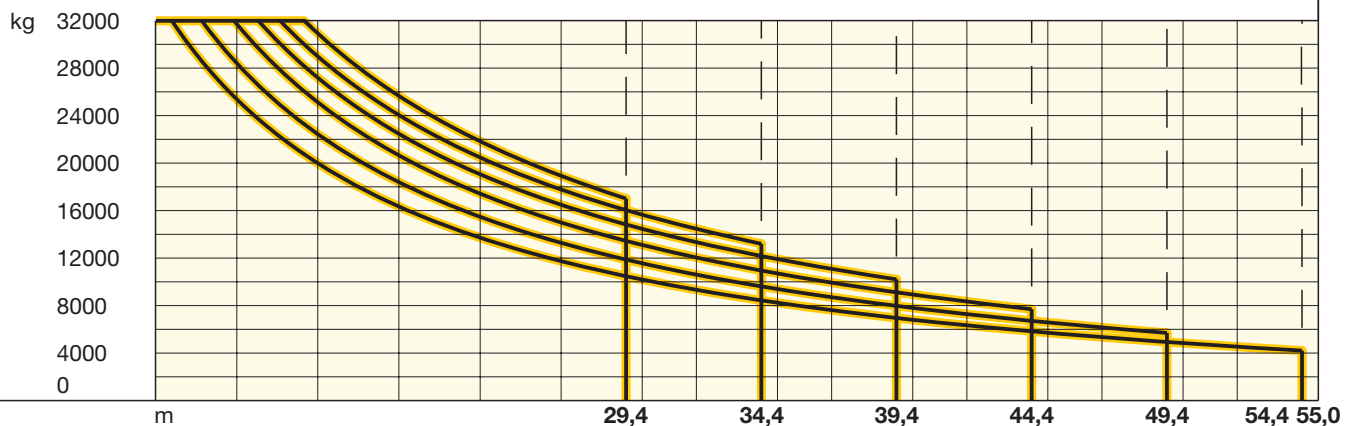
# Ausladung und Tragfähigkeit

Radius and capacity / Portée et charge / Sbraccio e portata / Alcances y cargas / Alcance e capacidade de carga


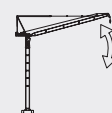

m	m/kg	m/kg												
		30,0	32,5	35,0	37,5	40,0	42,5	45,0	47,5	50,0	52,5	55,0	57,5	60,0
60,0	4,0-28,2 16000	14600	12940	11530	10330	9290	8380	7580	6870	6230	5650	5130	4650	4200
55,0	4,0-30,7 16000	16000	14640	13010	11600	10390	9330	8390	7560	6810	6130	5500		
50,0	4,0-32,9 16000	16000	16000	14450	12840	11450	10230	9150	8190	7300				
45,0	4,0-35,2 16000	16000	16000	16000	14200	12480	10970	9600						
40,0	4,0-37,2 16000	16000	16000	16000	15660	13000								
35,0	4,0-35,0 16000	16000	16000	16000										
30,0	4,0-30,0 16000	16000												





m	m/kg	m/kg																
		15,0	18,0	21,0	24,0	27,0	30,0	32,0	35,0	37,0	40,0	42,0	45,0	47,0	50,0	52,0	55,0	
55,0	4,0-12,6 32000	25380	19990	16340	13720	11740	10190	9330	8240	7620	6810	6330	5710	5340	4840	4540	54,4 m 4200	
50,0	4,0-13,7 32000	28410	22430	18390	15480	13280	11560	10600	9390	8700	7800	7280	6580	6160	49,4 m 5700			
45,0	4,0-14,9 32000	31730	25120	20650	17430	15000	13090	12040	10700	9930	8930	8340	44,4 m 7700					
40,0	4,0-15,8 32000	32000	27180	22460	19050	16480	14460	13340	11910	11090	39,4 m 10200							
35,0	4,0-16,6 32000	32000	28980	24040	20470	17770	15650	14460	34,4 m 13200									
30,0	4,0-17,5 32000	32000	30920	25650	21830	18920	29,4 m 17000											






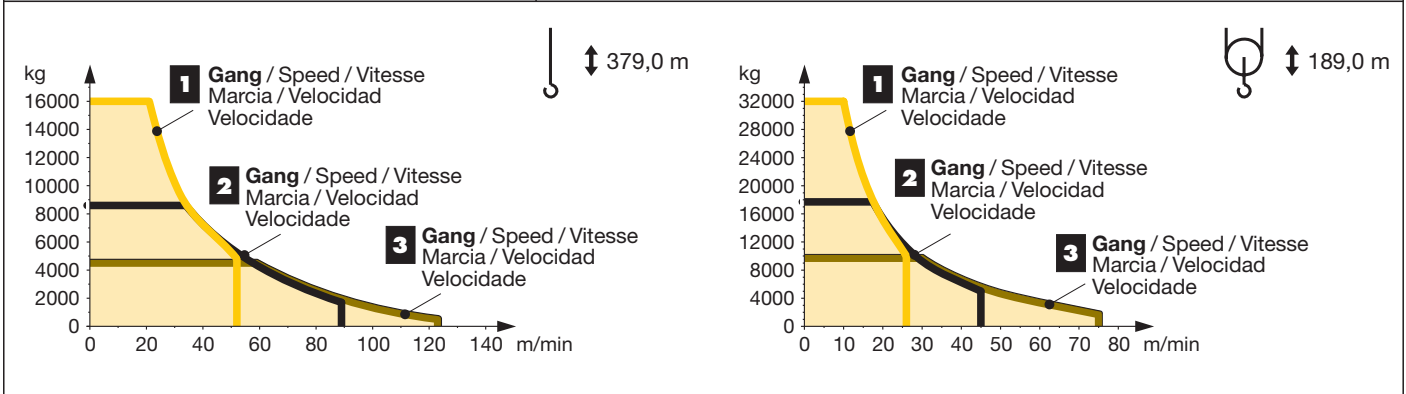
Tragfähigkeiten gültig bis 100 m Hubhöhe. Über 100 m Hubhöhe reduziert sich die Tragfähigkeit um das zusätzliche Seilgewicht. / Lifting capacities valid up to 100 m hoisting height. Over 100 m hoisting height, the lifting capacity is reduced by the additional rope weight. / Capacités de levage valables jusqu'à 100 m de hauteur sous crochet. Au-dessus de 100 m de hauteur sous crochet, la capacité de levage est réduite du poids de câble supplémentaire. / Portate valide fino a 100 d'altezza di sollevamento. Oltre i 100 m si riduce la portata causa il peso addizionale della fune. / Cargas válidas hasta altura de 100 m. Por encima de los 100 m se reduce la carga por el peso adicional del cable. / Cargas válidas até à altura de 100 m. Para além dos 100 m, reduz-se a carga pelo peso adicional do cabo.


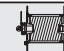

	0 ↔ 0,7 U/min sl./min tr./min	2 x 7,5 kW FU
	2,8 min 1,8 min	65 kW FU 110 kW FU
	<b>Unterwagen auf Anfrage</b> / Undercarriage on request / Chassis sur demande / Carro su richiesta / Carretón bajo consulta / Chassis sob consulta	

	65 kW FU	110 kW FU	110 kW FU
	65 kW FU	65 kW FU	110 kW FU
<b>kVA</b>	143,0	185,0	226,0

**kVA reduzierbar bei zu geringer Netz-Anschlussleistung, siehe BAL.**  
kVA can be reduced in case of too little power of the mains, see instruction manual. / kVA peut être réduit en cas de trop faible puissance du réseau, voir manuel d'instruction. / kVA riducibili in caso di potenza di rete ridotta (si veda manuale uso e manutenzione) / kVA variable para potencia de red demasiado pequeña, ver Manual de instrucciones. / kVA reduzível no caso de capacidade da rede elétrica muito baixa, ver manual de instruções.

		↔ <b>stufenlos</b> / stepless / régl. continu / régl. progressive / sin escalones / sem degraus					
max. 1143 m		kg	m/min	kg	m/min		
65 kW FU WIW 280 VZ 412 	4 <b>Lagen</b> Layers Couches Strati Camadas Capas	<b>1</b>	16000	0 ↔ 21	<b>1</b>	32000	0 ↔ 10
			4800	0 ↔ 52		10000	0 ↔ 26
		<b>2</b>	8600	0 ↔ 35	<b>2</b>	17700	0 ↔ 18
			1700	0 ↔ 89		5000	0 ↔ 45
		<b>3</b>	4500	0 ↔ 59	<b>3</b>	9700	0 ↔ 30
			500	0 ↔ 123		1700	0 ↔ 75



		↔ <b>stufenlos</b> / stepless / régl. continu / régl. progressive / sin escalones / sem degraus					
max. 1143 m		kg	m/min	kg	m/min		
110 kW FU WIW 300 VZ 406 	4 <b>Lagen</b> Layers Couches Strati Camadas Capas	<b>1</b>	16000	0 ↔ 34	<b>1</b>	32000	0 ↔ 17
			7500	0 ↔ 62		15500	0 ↔ 31
		<b>2</b>	8900	0 ↔ 58	<b>2</b>	18300	0 ↔ 29
			3600	0 ↔ 106		8000	0 ↔ 53
		<b>3</b>	4700	0 ↔ 97	<b>3</b>	10000	0 ↔ 49
			1000	0 ↔ 171		3900	0 ↔ 88

