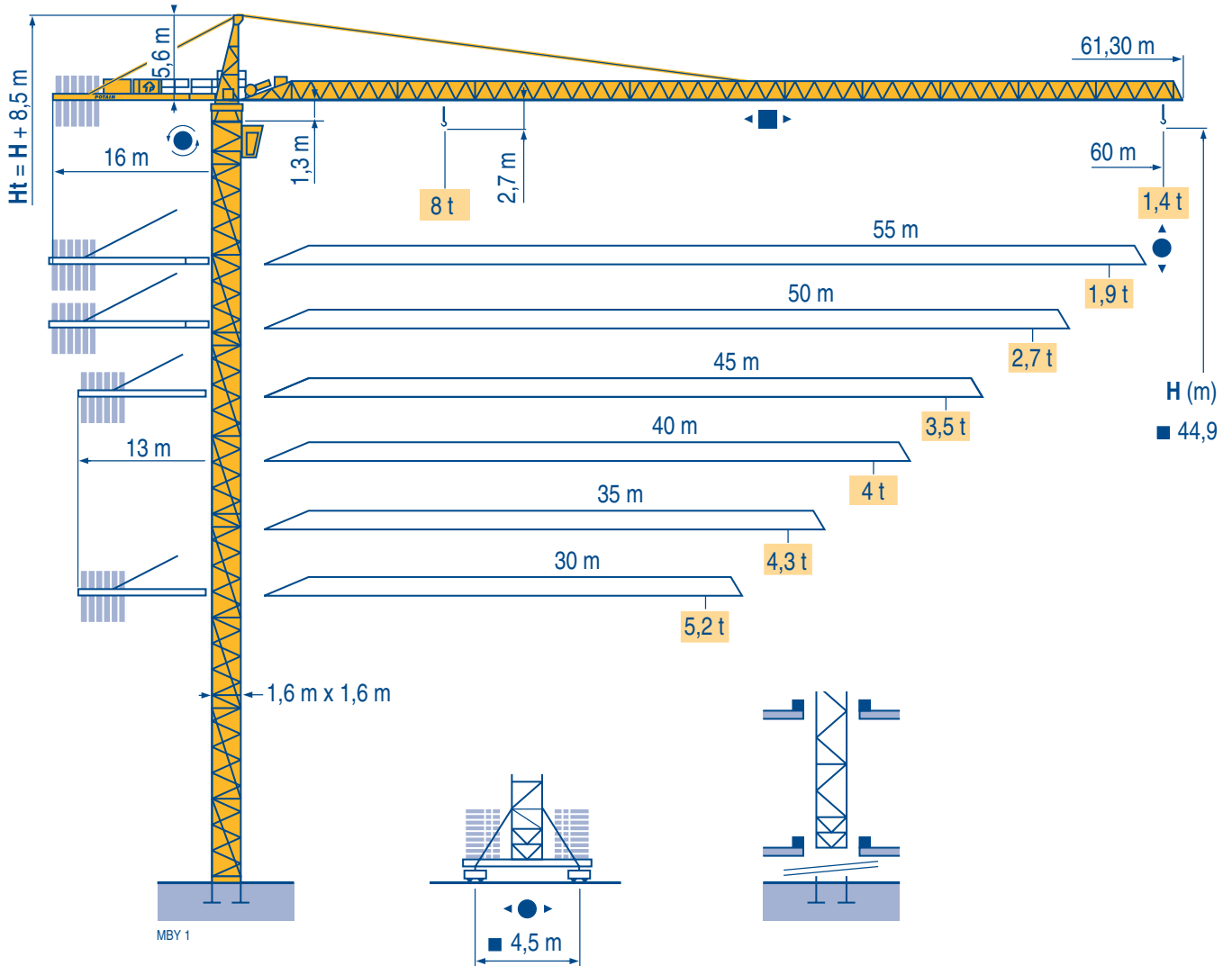


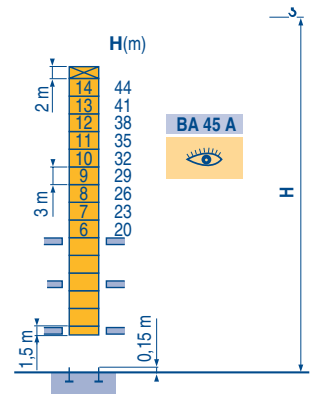
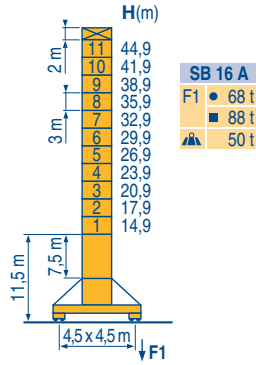
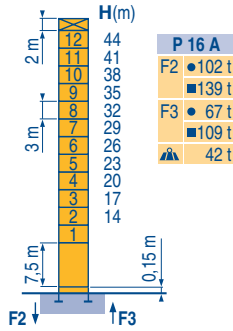
MC 175 B



Masts / Reactions

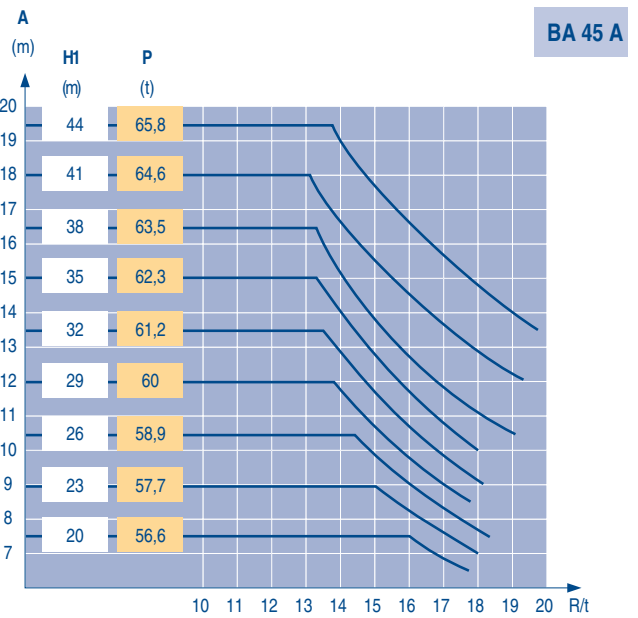
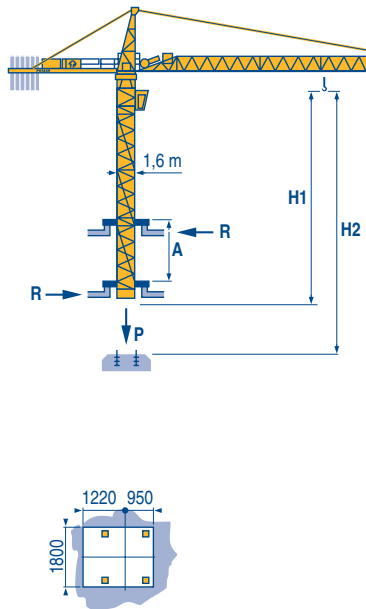
1,6 m
30 m → 60 m

MBY 1



Climbing crane

MBY 1



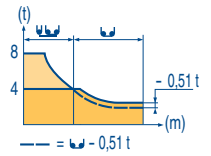
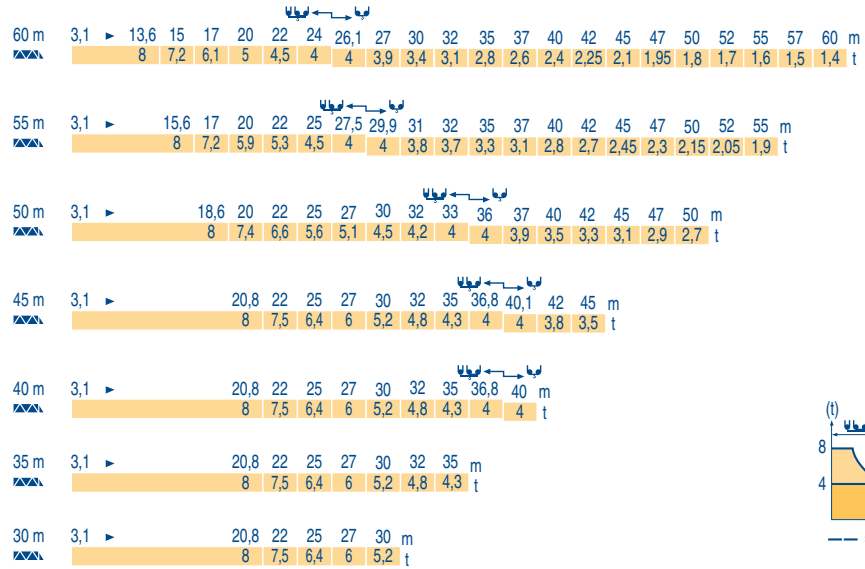
CITY CRANE
MC 175 B

GB

- Reactions in service
- Reactions out of service
- Without load, ballast (or transport axles), with maximum jib and maximum height.
- See climbing crane

Load diagrams

MBY 1



Counter-jib ballast

MBY 1

		3450 kg	2250 kg	▲ (kg)
60 m	16 m	4	2	18 300
55 m	16 m	3	3	17 100
50 m	16 m	3	2	14 850
45 m	13 m	5	1	19 500
40 m	13 m	4	2	18 300
35 m	13 m	3	3	17 100
30 m	13 m	3	2	14 850

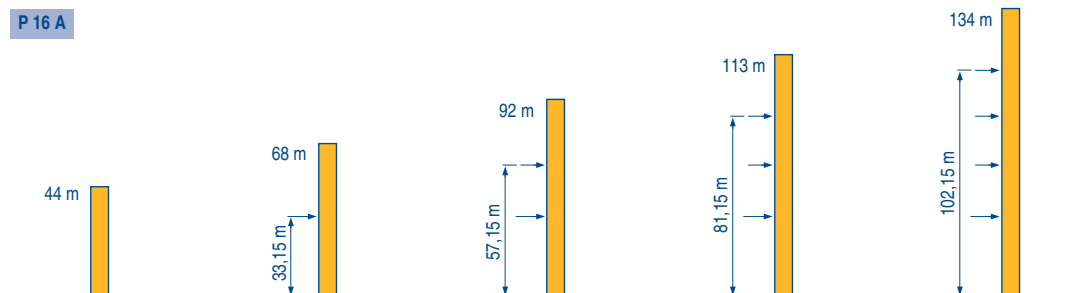
Base ballast

MBY 1

□ 1,6 m	SB 16 A	H (m)	44,9	41,9	38,9	35,9	32,9	29,9	26,9	23,9	20,9	17,9	14,9
		▲ (t)	72	60	54	54	54	54	54	54	54	54	54

Anchorage

MBY 1












CITY CRANE
 MC 175 B

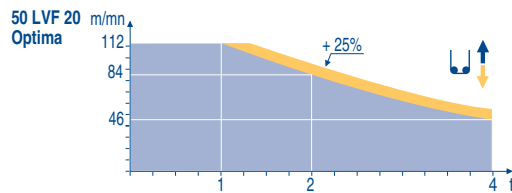
GB

- A Distance between collars
- H1 Crane height
- P Crane weight (in service)
- R Horizontal reaction


Mechanisms

MBY 1

				0 → 40		0 → 80		0 → 20		0 → 40		hp	kW														
	45 RCS 20	m/min	0	→	40	0	→	80	0	→	20	0	→	40	45	33	329 m										
		t	4			2			8			4															
	5 D3 V4	m/min	15 - 30 - 58										5	3,7													
	50 LVF 20 Optima	m/min	3,8	→	14,8	→	46	→	58	→	84	→	112	1,9	→	7,4	→	23	→	29	→	42	→	56	50	37	363 m
		t	4		4		4		3		2		1	8		8		8		6		4		2			
	6 DVF 4	m/min	0 - 6 → 76										5,5	4													
	RCV 145	rpm	0 → 0,8										2 x 6	2 x 4,4													
	SB 16 A RT 324 R ≥ 10 m	m/min	12,5 - 25										2 x 7	2 x 5,2													
CEI 38 		IEC 38		kVA																							
400 V (+6% -10%) 50 Hz		45 RCS : 60 kVA 50 LVF : 70 kVA				2000/14																					





-  **GB** Hoisting
-  Trolleying
-  Slewing
-  Travelling
-  In compliance with the EEC Instructions on noise level


 This commercial document is not legally binding. For any technical information, please refer to the corresponding instructions.




www.smithcranes.co.nz








Americas
Tel : +1 920 683 6322
Tel : +1 717 597 8121



Europe - Middle East - Africa
Tel : +(33) 4 72 81 50 00
Tel : +(44) 191 565 6281



Asia - Pacific
Tel : +(65) 6861 7133
Fax : +(65) 6862 4142

Manitowoc Crane Group Asia Pte Ltd
Manitowoc Crane Group
26 Benoi Road
Singapore 629898
Tel: 65-6861 7133
Fax: (Admin/ Sales) : 65-6862 4040
Fax: (Service/ Parts) : 65-6862 4142
www.manitowoccrane.com

CITY CRANE MC 175 B
Réf. 2004 45 MBY 1

Réalisation Sedoc

Copyright.Reproduction interdite © POTAIN 2004